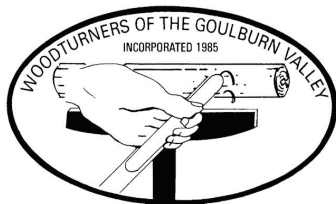


**WOODTURNERS
OF THE
GOULBURN VALLEY INC 3352K**



**VOLUME 26 – No. 6
JUNE 2012
NEWSLETTER**

**BILL CLARK – PRESIDENT
PHONE – 03-58216734**

**LEN TAYLOR – SECRETARY
PHONE – 03-58232430**

**CLUB PHONE – 0435940502
POSTAL ADDRESS**

P.O. BOX 2071, SHEPPARTON, VIC. 3632

W.T.G.V. INC. COMMITTEE

PRESIDENT – BILL CLARK

SECRETARY – LEN TAYLOR

TREASURER – LINDSAY WHITFORT

VICE PRESIDENT – DON McCRABB

PUBLIC OFFICER - LINDSAY WHITFORT

WORKSHOP MANAGER – WILLIS MUNDY

COMMITTEE MEMBERS

VERN MARVEN, PETER MEDDINGS,

TRISH PEDROTTI, GARY GRAY, IAN SMITH

AUDITOR – JUSTIN HOCKING

NEWSLETTER EDITOR – NORMA HARRISON

ALMONER – LORRAINE NOONAN

PRESIDENT'S REPORT JUNE 2012



Hi to All,

Welcome to winter officially even though I think it arrived a couple of months ago.

The next few months will again be busy ones with preparations for Kids Town, Toy distribution, Riverside Plaza Demos and sales, workshops fitted in with various programmes arranged. To keep up to date with these check the notice board regularly and if interested place your name in the appropriate place.

Preparations for our Annual Woodshow will be commencing as of now (yes it is that time again). Give some thought to demonstrating your skills at this event to keep our excellent record intact.

Saturday June 2nd. Pyrography day with Norma went very well with 9 participants taking part. I will not mention Willis and yours truly Machining day, (must be our looks). Next month's July meeting will follow the A.G.M. Give some thought to nominate for a position on the Committee of Management side of things.

Our thanks go to Helen Smith, finished her project early Tuesday evening and then decided to clean right throughout our Living area, vacuuming all carpets, mopping floors in kitchen and loo, wiping down tables and bench tops, much appreciated. Thanks Helen.

It is with disappointment I have to mention a member's comments published in the May newsletter. It has thrown a blanket of incompetence over our Workshop Supervisors also members, doesn't sing the praises of our Workshop either. It has raised the ire of Supervisors and replies have been published in this newsletter. It has also hit at our Workshop Manager, Willis Mundy, you could not find a more conscientious and capable manager than Willis. He continually monitors machinery and carries out repairs if and when required. If you know of a better one, please tell me.

I think I will finish on that note.

Clarky

**WOODTURNERS OF THE GOULBURN VALLEY INC. 3352K
NOTICE OF GENERAL MEETING
TO BE HELD AT THE WANGANUI SITE
76 PACKHAM STREET, SHEPPARTON
7.30 p.m. MONDAY 18th JUNE, 2012**

Welcome – Apologies –
Minutes

Correspondence – Treasurer’s Report
Committee Business – General Business

Door & Raffle – Perrie Bullock, Kevin Ritchie
Show & Tell Chairman – Gloria Woods

Demonstration – John Wright
Home Made Finishing Sander

**SPC ARDMONA
Factory Sales**

Open 9a.m. – 5p.m. – 7 days per week
Top brand foods in snack pack to catering sizes.
Convenient one level shopping and parking access.
Peaches Café offers breakfast, lunch and coffee.
Air-conditioned premises, comfortable restrooms.
20-70% off Australia’s leading brands

SPC Ardmona Factory Sales
197-205 Corio Street, Shepparton, Vic. 3630
Phone 03 58217033 Fax 03 58217440
PO Box 262, Mooroopna, Vic. 3629
Email info@ardmonafactorysales.com.au
www.ardmonafactorysales.com.au

MINUTES OF GENERAL MEETING OF WOODTURNERS OF THE GOULBURN VALLEY INC.

Held in the clubrooms, 96 Packham Street, Shepparton, 21/5/12

OPENING: President Bill Clark opened the meeting at 7.30, 38 members in attendance.

APOLOGIES: Marg & Colin Brock, Ros & John Wright, Carl Walker, Pam & Rob Henry, Dick Syer, Athel Chapman, Roy Eliason, Mel Swan, Peter & Helene Meddings, Val & Cyril Bedford, Graham Roberts, Helen Mullins, Rhonda & Ross Crozier, Viv Parry, Nina Slade, Ron Betts, Rob Orrman. The apologies were accepted having been moved by Mary Alexander and seconded by Chrissie Smith.

MINUTES: The minutes of the previous meeting as circulated in the newsletter were accepted having been moved by Jim Harrison and seconded by Rupe Brown.

CORRESPONDENCE: Since the last meeting 19 newsletters from various clubs and organisations were received.

General: Invite to official opening Mechanics Institute Extension 14th June.

“Screwit: Sachys Robertson square drive screws, seeking site at our Woodshow.

Invite to enter Craft Section Royal Melb. Show, Warragul Woodies “Forest Edge Experience” July 20-22. Riverside Plaza demo 7/8 and 13/14/15 July. Credit Union cheque for Sponsorship (\$503.80). Newsletters from Hospice Care and Shepp. Villages.

Promotional: Dorset Hardware, May – June specials. United Tools specials. Carba-Tec May catalogue.

Accounts: Mitre 10. Dorset Hardware. Nev Doyle Electrical.

Outward Mail: Letter to G.V. Health, we will incur costs of making “Teddy Bear”. Letter to Respite House, Benches for Cubby House estimate to cover costs \$200. Letter to Merrigum Historical Society, who want a “Glory Box” made estimated \$240. Letter to Kyabram Kinder, want learning tool or education piece made. Thankyou to Maxam Printing, Woodshow Raffle Tickets. Thankyou to Fruitgrowers Vic, Woodshow sponsor. Thankyou to Mitre 10, Woodshow sponsor. Thankyou to SPC Ardmona Factory Sales, Woodshow sponsor.

The correspondence as read was accepted having been moved by Norma Harrison and seconded by Wal Read.

TREASURER’S REPORT:	Balance b/fwd.	\$xxxxxxx
	Plus receipts	<u>\$xxxxx</u>
		\$xxxxxxx
	Less expenses	<u>\$xxxxxxx</u>
	Balance c/fwd.	\$xxxxxxx

The Treasurer’s report was accepted having been moved by Bev Clark and seconded by Margaret Adamson.

GENERAL BUSINESS – COMMITTEE:

Donation to Charity this year is \$1000 to Hospice Care, this amount is due to the pending “Glory Box” for Merrigum Historical Society, “Benches for Cubby House” Children’s Respite Centre and the “Learning Tool” for Kyabram Kindergarten. Cement sheet to go on wall near Woodheater. Offers for Planer-Thicknesser – Mooroopna Men’s Shed successful.

Should we establish an account at Hunters Hardware? Exterior flood lights need replacing/fixing. How many are interested in Carving? New Wheel Cutters needed for toys. Members must remove bark, then wire brush timber before using any machinery. Supervisors please wear fluoro vests and display your name on the board. Banner for Outside demonstrations, can we use or have made up something smaller. Trees out front need pruning or our sign needs to be moved. Flossie Smith has made a sample item for Kidsfest or similar, looks good. Suggestion from Glenda Thorne “Catering Committee”. Pending Scroll Saw Convention 2013 what do they expect from us? Woodfast Sawbench and Planer for sale 3Ø, Len to get more details.

Dates for Workshop Projects. 26/5 Woodturning, Gifkin Jig. 2/6 Wood Machining. 9/6 Bowl & Spindle Turning, Gifkin Jig. 16/6 Router Sign Making. 30/6 Finishing & Finishes. 2/6 16/6 Pyrography. 23/6 Toy Workshop.

GENERAL BUSINESS – MEMBERS:

Willis, no work to be carried out by members till Supervisors have checked machinery. Silky Oak blocks in workshop. Camphor Laurel and Walnut logs available. Kevin Bowens scrap timber pick up to be arranged. Toys that went to South Shepp. Rotary Auction were very much appreciated. Gary, thankyou for the toys made last Saturday – kits still need preparing. Rob – Supervisors need to delegate. Neil – can we start General Meeting at 7 pm during winter months? Len – Members need to report to Supervisors and discuss project procedure. Planer to have an “On” light fitted. Sawbench to have emergency “Off” switch. Ray – Club brochure needed, similar to sample shown. We should continue to support Mooroopna Mitre 10. Smithy – Who can assist, supervisors will delegate a member. Meeting close at 8.55 pm.

RAFFLE DRAW: 1st – Pen Blanks – Perrie Bullock
2nd – 40 Year Calendar – Gloria Woods
3rd – Pair Pen Trumpets – Trish Pedrotti
4th – Peaches Café Voucher – Kevin Ritchie.

Guest Speaker report on Page 7.

SHOW & TELL 21/5/2012

WILLIS MUNDY Lazy Susan, Elm, Satin finish.

JIM HARRISON Knife block, Redgum, Marine Varnish finish.

Carving Fork, rehandled with Redgum, Marine Varnish finish.

NORMA HARRISON Disposable Knives, Forks and Spoon, from Maggie Beer's Farm Café, Adelaide. Looks like they are pressed to shape.

LEN TAYLOR Small Bread Board, Redgum and Silky Oak, Cooking Oil.

DON McCRABB Segmented Vase, mixed timbers, Marine Clear.

IAN SMITH Bowls, Camphor Laurel, Spray Estapol finish. A light.

PERRIE BULLOCK Large Hollow Form Bowl, Cedar, Orange Oil finish.

VERN MARVEN Long tray on legs, Oak Barrel Staves, Gloss Poly.

BRYAN FINLAYSON Server tray, Poplar.



Guest Demonstrator – Ian Smith – Long Hole Boring

Ian has adapted a No. 2 Morse Taper that fits the tailstock which is bored out to suit the drill being used. The stock is held in a chuck to start with so the centre can be accurately found and a recess made to suit the tailstock morse taper adaptor. The stock is then set up, that is, chuck undone, stock set between adaptor and chuck depending on the length of material to be bored. Ian has an ordinary engineers drill welded to a length of rod, this is passed through the tailstock which centres the drill and holds it centre during drilling operation, this worked well. Ian's other long hole boring drill which is made from 4 mm diameter stainless steel rod he uses for drilling Bagpipe practice chanter, this has a different cutting point configuration than a standard drill as shown below.

Thank you Ian. *Len Taylor*



Reply to letter published in May 2012 Newsletter by Mr.

Noel Ryan

To the Committee and members of the WTGV, as a supervisor, I take umbrage at the letter presented at our last general meeting from Noel Ryan stating that our equipment was worn and had problems.

Every time someone has reported machinery problems to me, they have been rectified straight away or parts ordered for repair.

Noel has often complained to me that machinery is making a strange noise – on inspection, there has been nothing wrong with the machinery.

Stating that he works 4 hours on machinery – he should not be touching it, unless the workshop manager or supervisor asks him to. I think he is over exaggerating the odd time a bit of machinery breaks down or is worn.

If the bandsaw is not cutting straight he should report it to the supervisor who will rectify the problem. Blades do wear out with a lot of use.

With regards to machinery stalling, either the blade is blunt and needs replacing or you are forcing the wood in too hard, which is not recommended by the club. You should see a supervisor to assess the problem.

I do not know the problem Noel had with the big boy sander, but again, if all members report it to the supervisor, the problem can be fixed. Even if there are half a dozen people in the room, it is only you using the machine that will realise there is a problem with it. Again, Noel should not be trying to solve the problem unless asked by the supervisor to do so.

Therefore, Noel is contravening the rules recommended by the club for safe use of machinery.

Supervisor, John Wright

(Another letter from a Supervisor is on page 8)

SCROLL SAW BLADES

We are Australian Distributors for the Swiss made **Pégas®** blades and the German **Flying Dutchman** blades. These are available in both pinless and pinned. Pinless are \$4.50 a dozen, while pinned are \$6 a dozen. We also sell mini chucks, mini twist drills and a wide range of scroll saw books.

All prices are plus postage.

**We stock Swiss Made Coping Saw Blades in 4 different sizes—
\$5 a dozen.**

Pyrography machines are sold.

... Contact us for a blade and accessories catalogue...

Helen Harris

PO Box 1384, Murray Bridge SA 5254

Ph 08 8531 3440

Email—ochjh@netconnect.com.au



Reply to letter published in May 2012 Newsletter by Mr. Noel Ryan

If by “standing on the toes” it was the intention of the writer to raise the ire of the supervisors of the club it could be said that his effort had been successful.

Supervisors do not wish to apologise in refuting the claims made by Noel, we believe the statements made by him to be fallacious and misleading in the extreme. This was borne out by all supervisors who attended an instruction session on Wednesday 16th May. An inspection was made of all machines and they were found to be safe and in good working order. In fact the only minor defect noted was a small dust collection hose which had become unattached to the router table, it has since been rectified.

If Noel has any difficulty with any machinery it can only demonstrate a degree of incompetence. Should any malfunction occur which cannot be rectified by simple adjustment it is supposed to be immediately reported to the supervisor on duty or the workshop manager. Supervisors do not recall any such report being made.

Note: The date these alleged events were supposed to have taken place is not mentioned. As for Noel spending 4 hours working on equipment, date not mentioned again, we are at a loss at how many sessions he worked on this equipment for as each session usually runs for 3 hours, less time out for a smoko break. Was this work supervised?

It has been noted by some members how Noel took it upon himself to work on “a dovetail jig” only to abandon the job and leave it for others to reassemble. It is our experience that some people will never become competent in the use of woodworking machinery no matter how long they remain a member of the club.

It is because of these people that the supervisors have agreed that all members must seek permission of the supervisor on duty and if required demonstrate their skill before operating machinery.

We hope that Noel will consider this rebuttal before making similar statements in future.

Supervisor - Carl Walker

*WOODTURNERS OF THE GOULBURN VALLEY INC
APPRECIATES RECEIVING SPONSORSHIP FROM THE FOLLOWING
BUSINESSES:*

**GOULBURN MURRAY CREDIT UNION
MOORoopNA MITRE 10
FRUIT GROWERS VICTORIA
MAXAM PRINTING**

PLEASE SUPPORT THEM AS THEY SUPPORT US

**TO OUR MEMBERS AND ANY OF THEIR FAMILY WHO ARE NOT WELL OR
ARE IN HOSPITAL, THE CLUB WISHES THEM A SPEEDY RECOVERY
RECOVERY**

**W.T.G.V. WEBSITE - www.woodturnersgv.com
This newsletter can be seen in colour on the website.**

NEWS “FLASH”

**The Club’s small steel torch which is kept
near the “sign in” book, has gone walkabout.**

**If you are aware of it’s whereabouts, please send it
home. The torch has WTGV
engraved on it.**

LIBRARY

Two of the club’s DVDs are missing and
have been for some time.

Would members please check to see if
they have them at home.

Thanks – Librarian, Don McCrabb

**NORTH EAST WOODIES GATHERING AT ALEXANDRA 5.5.12.
HOSTED BY EILDON AND DISTRICT WOODWORKERS GUILD**

There was certainly a nip in the air whilst club members waited for the bus to arrive. It was a 7.30 a.m. departure with 32 members on board., We arrived at Alex about 9.30 a.m., registered and had a hot cuppa while catching up with other woodies.

Clarrie Glass from the Eildon Woodies was MC for the day and gave a run down on the day's programme, first off it was Eildon President Ernie Hunt who gave a run down on the club's activities over the past 12 months, extension number 5, new machines in workshop, chain saw slabbing machine, local Shire arriving with 5 truckloads of logs, Thursday is slabbing day. Club now has about 50 members.

WTGV President Bill Clark was next up and reported on his 9 months in the chair, we are now into our monthly Toy Making Workshops, "KidsFest" in October, visits and demos at various locations, 3 new machines for the workshop, March Wood Show, boardroom table for Wanganui Park Secondary College and 24 new members on the books.

Graeme Dosser gave a report on Benalla's activities, 45 members, school kids projects 4 times a year, and other small community projects.

Wangaratta's Les Munro gave the club report – 80 members, annual fundraising raffle, workshop power upgrade, Tuesday, Thursday, Saturday workshop open in the a.m., Wednesday evening scroll saw and pyrography, 2nd Saturday in month toys, purchased a "Sand Flea", made up a trailer with bench, vices and tools, hired out to schools.

Albury Wodonga President gave his report, club has about 150 members with 20 -25 women, 6 juniors, clubrooms extended 3 times, have pyrography, carving, scroll saw sessions, exhibition at the Art Gallery every 5 years, Farmers' market every 2nd Saturday, carving expo, 16-17 June, scroll saw 4 August, Ken Wraight to demo 7 and 8 July, Thursday and Sunday are the only days they are not open.

Mulwonga's Kevin Andrews reported 15 members, open every day, produce kit forms for school projects, competing with "Mens Shed" makes things difficult.

Mansfield's Geoff Webb reported that the club only has 8-10 members, bush market 4 times a year, community projects such as a reading desk made from local timbers.

The next item on the programme was show and tell with many different and varied works on display from the very small to tables and benches.

It was now time for a demo from the E & DWG, Ernie Hunt making balls

With his special tools, Clarrie Glass doing split bowls, starting with a square block, turned with a round and hollowed out centre leaving thin square wings behind the bowl, this when cut in half makes the feet to sit it on.

Max May was turning angels at which they have done many for community clubs.

Lunch was the next item.

After lunch, the rep from “Ryobi” then talked about their new range of tools, including variations in battery type, charging, compatibility, charging cycles and expected life.

Drill drivers up to 13 mm capacity. Hammer drills with slotted drill bits. 2 Speed drills (power and speed), different torque ratings, impact drivers, “Renovator” and its attachments, angle grinders, circular saws, jig saws, reciprocating saws, vacuums, small sanders and random orbital sanders. Radios with battery charging port, USB facility, “Ipod” port, phone charging port, torches with Zenon bulbs which are 8 times brighter, area lights, 30 hours of light, portable fans with 8 hours of life.

Afternoon tea followed.

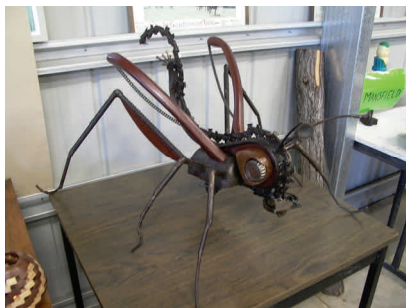
Chain saw milling was the next item, these saws have a unique bench set-up which brings the saw up to a convenient height, chain was not cutting like it should.

Raffle draw followed with many different prizes and as the time was getting close to 4 pm it was time to load up and head for home, arrived back in Shepp. about 6 pm.

A good day was had by all with about 120 woodies in attendance.

Thanks to Neil for ringing and rounding up the members for the trip to Alex and thanks again to Neil for delivering us safely.

Thank you from *Len Taylor*.



COMING EVENTS

16th June – Pyrography & Router Sign making

18th June – General Meeting

23rd June – All day Toy Workshop

30th June – Finishing & Finishes

**16th JULY 2012 A.G.M. -
followed by General Meeting**

WORKSHOP SUPERVISOR ROSTER

Tues	Thurs.	Sat.
12/6 Carl	14/6 Vern	16/6 Willis
19/6 Carl	21/6 Lindsay	23/6 David
26/6 Ian	28/6 David	30/6 Bill
3/7 Carl	5/7 Vern	7/7 Lindsay
10/7 Willis	12/7 Ian	14/7 John
17/7 Greg	19/7 Lindsay	21/7 David
24/7 Bill	26/7 Carl	28/7 Vern

Tuesdays p.m. Don McC plus supervisors
Thursdays p.m. Len plus supervisors

AVAILABLE TO MEMBERS FROM WORKSHOP

AVXL VP GLUE 500ml
MOBILCER END SEALER 1 litre
JOINING BISCUITS PACK OF 50
DOWELS PACK OF 50 – 8,10 AND 11mm
WOODSCREWS VARIOUS SIZES
SANDPAPER – BELT, SHEET & VELCRO
BANDSAW BLADES MADE TO SUIT
CLUB LIBRARY
BOOKS, MAGAZINES, VIDEOS & DVDS
AVAILABLE FOR ONE MONTH LOAN